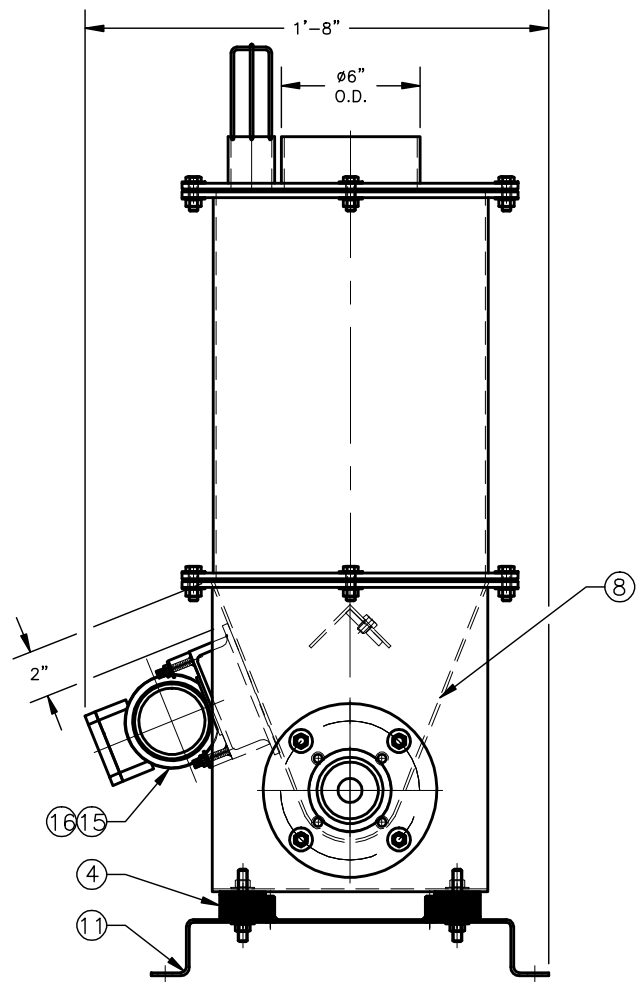
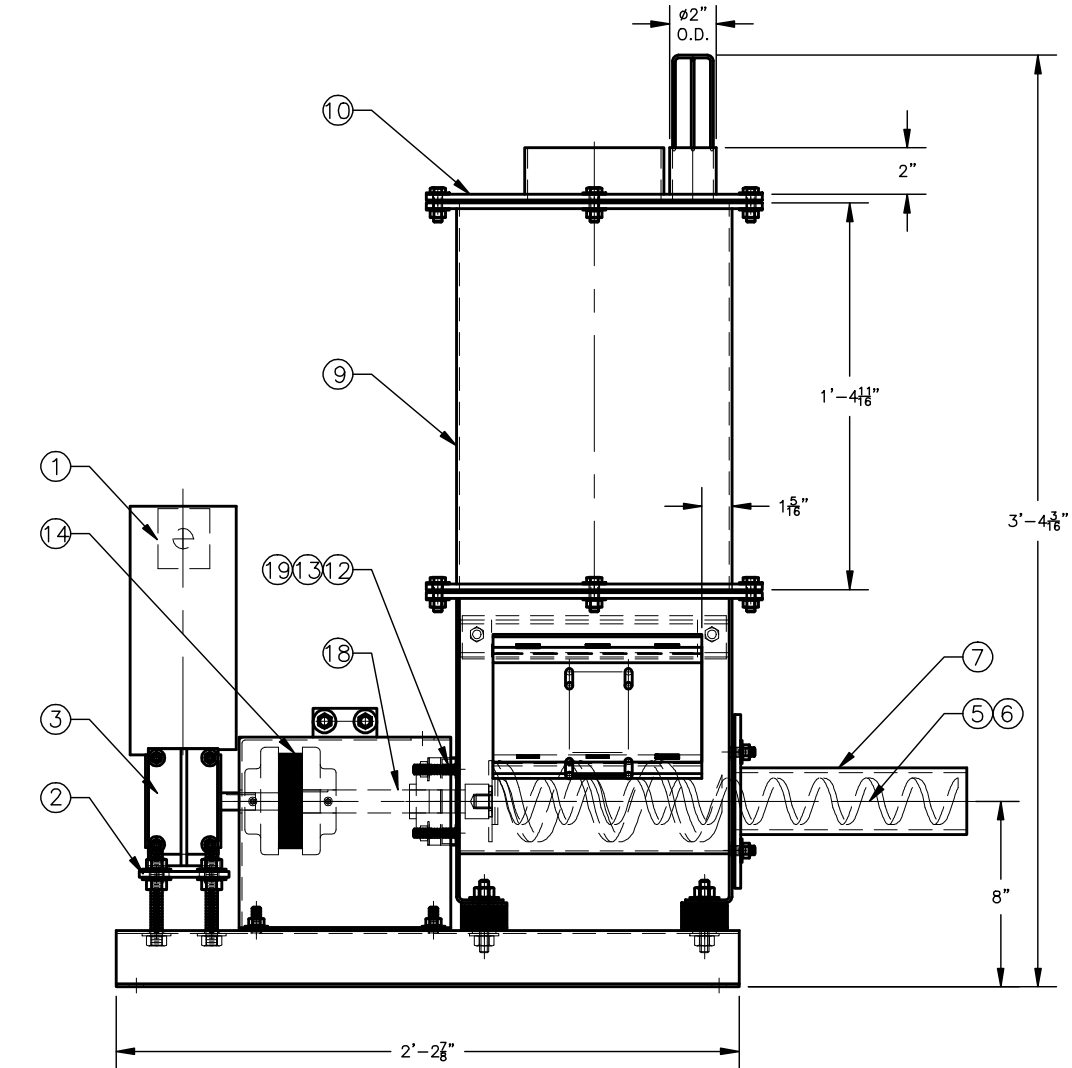


ITEM	DESCRIPTION	QTY	REFERENCE
1	GEAR MOTOR 1/2 HP, 50 RPM, TENV, DC	1	GP3307
2	MOTOR MOUNT, 13-1/4" x 3-7/8" x 1/4" TH., SS 304	1	20563-DOS-206
3	MOTOR SUPPORT, 1/4 TH., SS 304	1	20563-DOS-208
4	VIBRATION ISOLATION MOUNTS, BLACK RUBBER 57 DUROMETER	4	A 315-210
5	Ø2" SCREW X 20" OAL., 1/4" OPEN FLIGHTING, CONTINUOUS WELD	1	20563-DOS-210
6	Ø3-1/2" X 9-7/8" CONDITIONING SCREW, SS 304	1	20563-DOS-211
7	SCREW SPOUT, Ø2-1/2 SCH.40, SS 304	1	20563-DOS-205
8	VOLUMETRIC FEEDER LOWER HOPPER, SS 304, 11 GA.	1	20563-DOS-201
9	VOLUMETRIC FEEDER UPPER HOPPER, SS 304, 11 GA.	1	20563-DOS-203
10	VOLUMETRIC FEEDER COVER, SS 304, 1/4" TH.	1	20563-DOS-204
11	VOLUMETRIC FEEDER BASE, SS 304, 11 GA.	1	20563-DOS-202
12	FLANGE BEARING 4 HOLES, Ø1"	1	UCF-205E-16
13	DROP OUT SEAL Ø1"	1	CSFP2
14	QUADRAFLEX COUPLING #7S Ø3/4" x Ø1"	1	7S
15	VIBRATOR MOUNT, SS 304	1	20563-DOS-209
16	VIBRATOR, .16 HP, 115V/1/50, 3600 RPM, 236 Lbf	1	MVE.0100.36.MU.
17	HAND GUARD, SS 304 11 GA.	1	20563-DOS-207
18	SHAFT Ø1" X 7-7/16" LG. C/W COND. SCREW ADAPTOR	1	20563-DOS-212
19	FLANGE BEARING GASKET	1	20563-GAS-103B



APPLICATION DATA	
MATERIAL	HYDRATED LIME
BULK DENSITY	30 LBS./CU. FT.
FLOW RATE	4.4 CU. FT./HR.
MOISTURE	NIL
TEMPERATURE	AMBIENT
PRESSURE	ATMOSPHERIC
PARTICLE SIZE	CUSTOMER TO SPECIFY

REV.	DESCRIPTION	DATE
A	INFORMATION	

CON-V-AIR INC.
SPECIALISTE EN MANUTENTION DE MATIERE EN VRAC
SPECIALIST IN BULK HANDLING
3500 1^{ere} rue St-Hubert, (QC) J5Y 8Y5 - Tél.: 450-462-0250 - Fax: 450-462-0785
www.con-v-air.com info@con-v-air.com

PROJET: VOLUMETRIC FEEDER LEAP

TITRE: 2", INOX 304 ASSEMBLY

PROJET NO. CVA-DOSS2	APPROUVE PAR: F.NOEL ING.
DESSIN NO.	DATE: 24/10/2006
DESSINE PAR:	ECHELLE: 1:8

Echelle Valable Pour Le Format 11x17 - Dimensions En Pouces - AutoCAD 2000